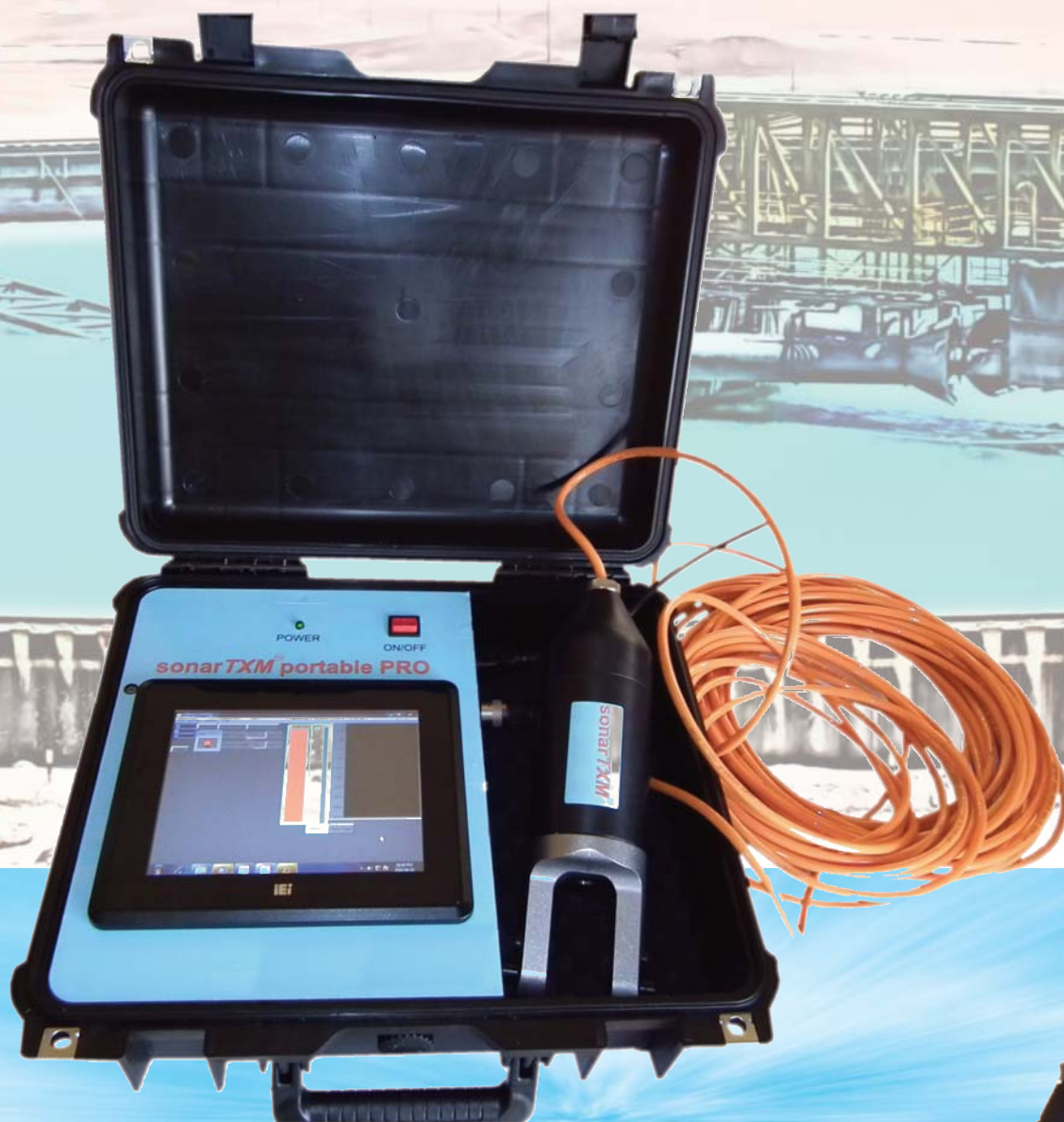


# sonarTXM portable pro



portable thickener  
mud level and  
density profile  
measurement



smart-level.com

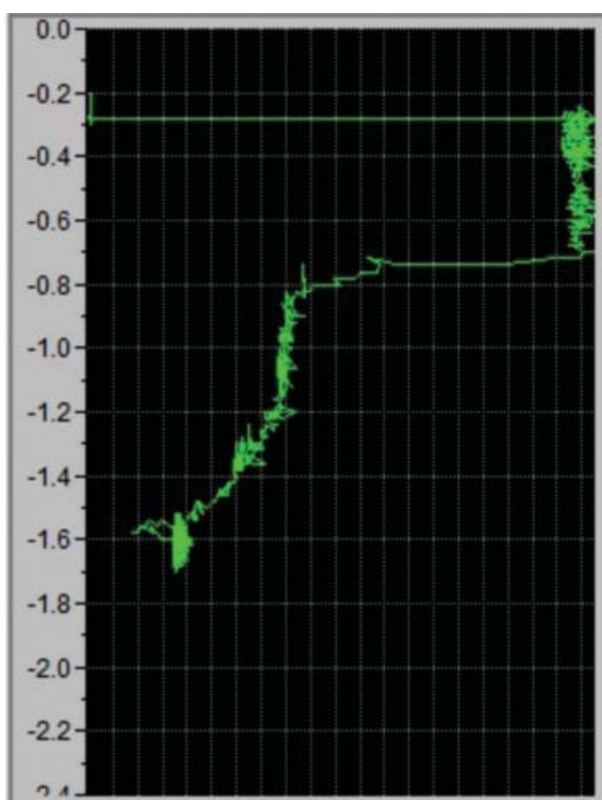
The **sonarTXM® portable PRO** is designed to detect mud levels in thickeners. As a portable instrument, it is very useful for quick trouble shooting.

Each time a measurement is made, the complete density profile is saved along with the various measurement parameters and results. The unit is wifi enabled and can simply be connected to another computer for data download in a standard csv file format.

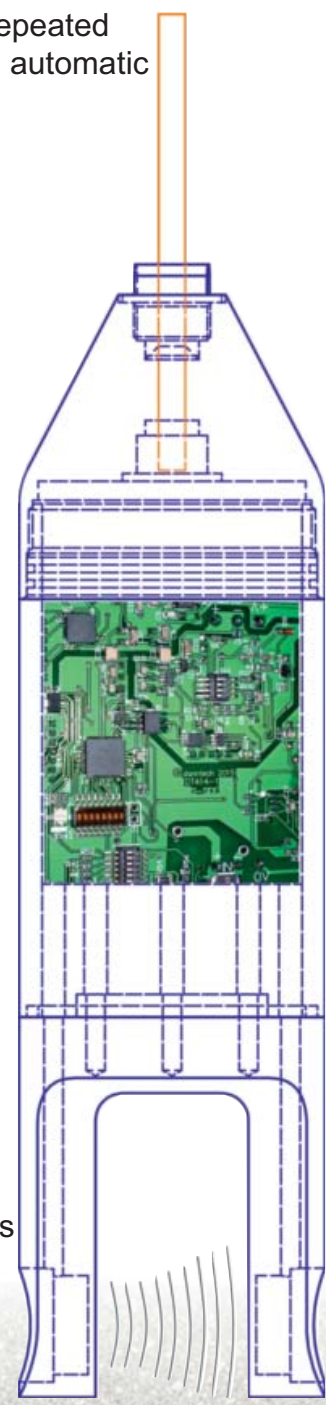
Internal Lithium Ion batteries ensure at least four hours of continuous use between charges.

**Options that we can also offer are:**

- GPS logging of each measurement so that the precise date, time and location of each measurement is recorded.
- A basic version which is fitted into a backpack and can be used to do repeated measurements with audible indication of a mudlevel measurement and automatic arming and recording of the results.



AIR  
CLEAN WATER  
MUD LEVEL  
MUD DENSITY PROFILE



**sonarTXM® Sensor**

This is a specialized, purposed designed, sensing device which can be submerged to 50 m which has its own internal circuitry to conduct several types of measurements.

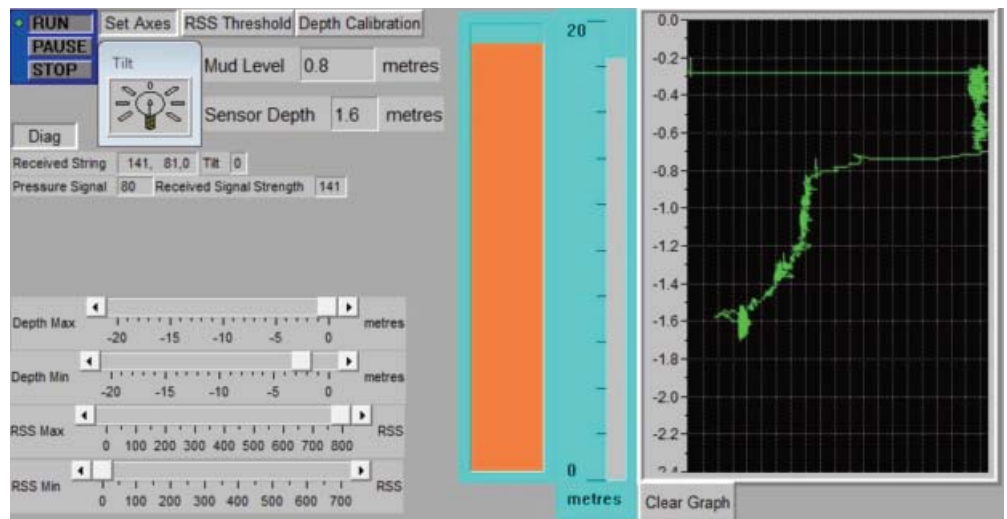
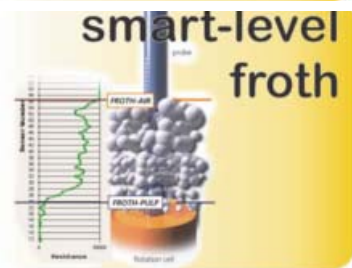
The measurements are primarily ultrasound attenuation at one or more wavelengths to suit the mud characteristics. The connecting cable provides power and communications to and from the sensor. The sensor has some intelligence built-in to ensure optimum, reliable, repeatable and accurate measurements.

**The basic measurement process is as follows:**

- Plug in the SonarTXM® probe 20 m orange cable. Power up.
- Press the RESET button for the system to be armed and ready for measurement.
- Lower the probe vertically into the thickener while holding on to the orange cable to carry out a mud bed level measurement.
- Take care to synchronize the measurement time with the rake position to avoid the probe getting tangled with the rake.
- Monitor the screen for indication of the following parameters during the measurement period: sensor (probe) depth below water level, mud bed level below water level and tilt indication
- Record the mud bed level below waterline value and compare with process target for underflow control purposes.
- The Sensor Depth indicates the depth of the sensor below the water level continuously.
- The Mud Level Below Waterline window will lock on the mud bed level from the last measurement until the reset button is pressed again.
- Press the RESET button to arm the system again for a new measurement.
- When finished, switch the electronics off to save battery power between measurements.
- Unplug the SonarTXM® probe, coil cable and pack away in black case



On-site demonstration is available, please contact us to arrange.



**smart-level**<sup>®</sup>  
TECHNOLOGIES

**smart-level technologies (pty) ltd**

PO Box 1023, Fontainebleau, Randburg, 2032  
 58 Charlie Road, Fontainebleau, Randburg, 2194  
 Co #: 2017/490403/07  
[www.smart-level.com](http://www.smart-level.com)  
 robertd@smart-level.com  
 Tel: +27 (0) 71 306 6588